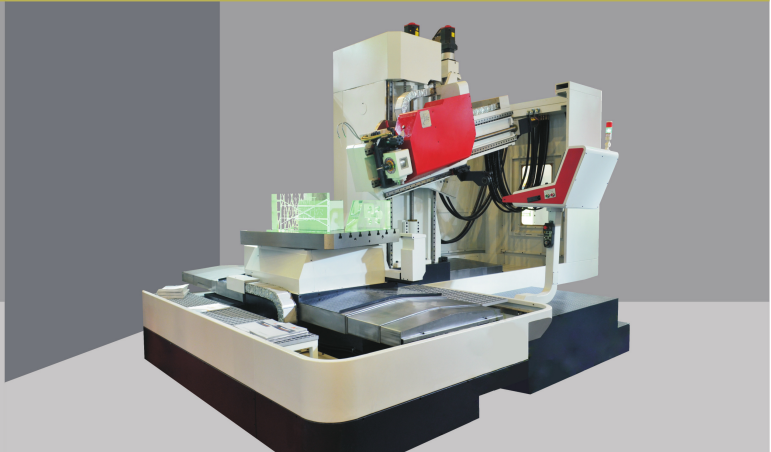


ZJR SERIES SIX-AXIS CNC DEEP-HOLE DRILLING MACHINE TOOL

ZJR系列六轴数控深孔钻



ZJR系列数控深孔钻床是一种以深孔钻削为主，兼铣削功能于一体的自动化机床。该机床集现代工业先进钻削技术为一体，性能、精度、加工范围、操作方式、工作效率均达到国际先进水平。

ZJR series CNC deep-hole drilling machine is automatic and multifunctional, majoring in deep-hole drilling and cutting, while milling function is also professional. With the modern industry advanced technology, the performance, accuracy, processing range, operating mode and working efficiency are in the international advanced level.

PRODUCT FEATURES 产品特点

- 制系统采用 FANUC Oi-MF 数控系统，性能稳定可靠，操作编程通用方便，售后服务完善及时。
FANUC Oi-MF CNC system: stable performance, convenient operation programming, perfect and punctual after-sales service.
- 六个坐标轴及主轴电机均为FANUC伺服电机，电机特性好，低速性能好。
FANUC servomotor for six coordinate axis and spindle: good characteristics and perfect low speed performance.

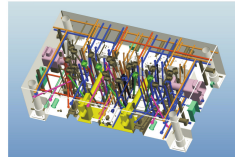
- 运动部件采用高精度，滚珠丝杠、滚柱线性导轨，实现了机床运动中的高精确定位。
With high-precision ball screw bar and rolling linear guide, the operating components make positioning accurately.
- 本机冷却系统采用了远距离控制装置，可根据钻孔的大小、材料的不同、出屑情况、精度要求等，分别调整不同的流量和压力，从而达到最优化的冷却效果。
Remote control device is adopted in cooling system. Depending on the hole size, materials, chips and required precision, the flow rate and pressure can be adjusted and it could optimize the cooling result.
- 机床精度检测，采用英国雷尼绍公司生产的激光干涉仪进行动态检查，并根据检查结果进行动态补偿，从而确保机床整机定位及重复定位精度。
Precision detection: The dynamic inspection is done by British Renishaw laser interferometer. It makes compensation dynamically according to the test result, which ensures the positioning of the whole machine and re-positioning accurately.
- 该系列数控深孔钻床主要用于模具行业高难度的深孔加工，为用户提供了高效率、低成本、人性化的加工工艺流程，产品一经推出就得到了广大用户的一致好评。
ZJR series CNC deep-hole drilling machine is mainly used for extremely difficult processes of deep-hole in mold industry. It's spoken highly of its high-efficiency, low-cost, humanized technological process.



PROCESSING CASE 加工案例



车灯模
Automobile light mould



3D展示
3D show

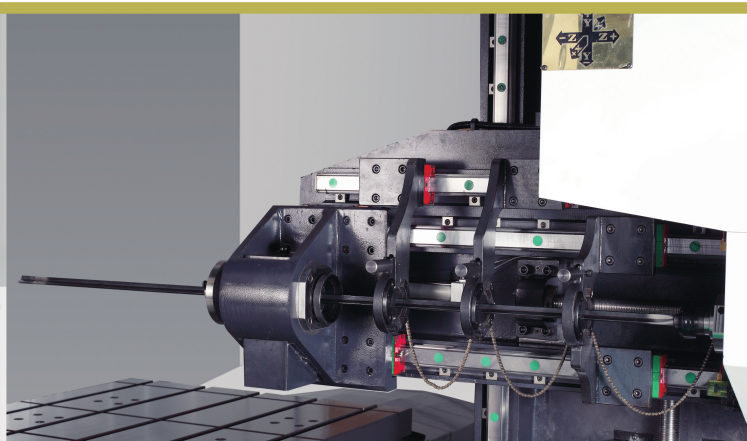
ZJR系列六轴数控深孔钻技术规格 Technical Specifications of ZJR Series Six-Axis CNC Deep-hole Drilling Machine Tool

项目Items	ZJR10-1210	ZJR13-1613	ZJR15-2515	ZJR15-3017	
加工能力 Processing Capacity	枪钻钻孔直径 Diameter of the Hole for Gun Drill	φ3-30 mm	φ3-50 mm	φ3-50 mm	φ3-50 mm
	枪钻最大钻孔深度 Maximum Depth of the Hole for Gun Drill	1000 mm	1300 mm	1500 mm	1500 mm
加工行程 Processing Range	工作台左右行程(X) Processing Range (from Left to Right) of the Working Table	1200 mm	1600 mm	2500 mm	3000 mm
	滑台行程(Y) Processing Range of Sliding Table	1000 mm	1300 mm	1500 mm	1700 mm
	立柱行程(Z) Processing Range of Column	500 mm	600 mm	800 mm	800 mm
	滑枕旋转角度(A) The Rotary Angle of Ram	主轴向上转15度, 向下转25度 The Spindle Turns upward 15 degrees, and down to 25 degrees			
主轴 Spindle	主轴锥孔 Taper Hole of Spindle	BT40	BT50		
	主轴最高转速 Maximum Speed of Spindle	4500 rpm			
功率 Power	主轴电机 Spindle Motor	11 kw	15kw/18.5kw		
	X轴进给伺服电机 X Axis Servo Motor	27 N.m	36 N.m	36 N.m	36 N.m
	Y轴进给伺服电机 Y Axis Servo Motor	27 N.m	36 N.m	36 N.m	36 N.m
	Z轴进给伺服电机 Z Axis Servo Motor	27 N.m	36 N.m	36 N.m	36 N.m
	W轴进给伺服电机 W Axis Servo Motor	11 N.m	27 N.m	27 N.m	27 N.m
	A轴进给伺服电机 A Axis Servo Motor	20 N.m	36 N.m	36 N.m	36 N.m
	B轴进给伺服电机 B Axis Servo Motor	20 N.m	36 N.m	36 N.m	36 N.m
	机床总功率 Total Power	45kw	55kw	55kw	55kw
数控分度台 CNC Index Table	承重 Max. Loading Capacity	5 ton	5 ton	15 ton	20 ton
	尺寸[长×宽]Measurement	1000×1000 mm	1200×1200 mm	1800×2000 mm	2200×2400 mm
冷却系统 Cooling System	冷却液压力范围(枪钻) Pressure Range of Cooling Liquid(Gun Drill)	2-15 MPa (定额定2-9 MPa)			
	冷却液流量范围(枪钻) Flux of Cooling Liquid(Gun drill)	6-85 L/min			
尺寸及重量 Measurement & Weight	机床占地面积(长×宽) Floor Area of Machine Tool length*Width	7500×5500 mm	8000×6200 mm	8350×6500 mm	10050×7200 mm
	机床最大高度 Maximum Height of Machine Tool	4200 mm	5400 mm	5600 mm	5800 mm
	机床重量Weight of Machine Tool	约16ton	约30 ton	约30 ton	约40 ton
系统 System	数控系统CNC System	FANUC Oi-MF			
铣削功能 Milling Function	铣削行程Milling Range	1400mm	1900mm		

因产品不断改进开发，参数规格及外观图片仅供参考，具体以实物为准，详情请登录网站：<https://www.shuanglicnc.com/>
Due to the continuous improvement of products, specifications and pictures are for reference only. For details, please visit our website: <https://www.shuanglicnc.com/>

ZJA SERIES THREE-AXIS CNC DEEP-HOLE DRILLING MACHINE TOOL

ZJA系列三轴数控深孔钻



PRODUCT FEATURES

产品特征

- 三座标数控联动，全自动运行钻孔指令；
- 细长深孔加工过程无需退刀，钻孔效率比普通钻床高达6倍以上；
- 加工孔径范围：枪钻： $\pm 3-35\text{mm}$ ，BTA： $\pm 18-65\text{mm}$ （BTA为选配）
- 加工深度单边可达2500mm，长径比 >100 ；
- 具有较理想的孔径精度、孔直线性、表面粗糙度等钻孔精度
- Three coordinates NC linkage runs automatically;
- Slender deep hole machining process without return, drilling efficiency is as high as 6 times more than ordinary drilling machines;
- Processing aperture range, gun drill: 30-35 mm, BTA: 30 18-65 - mm (BTA is optional);
- Unilateral processing depth of up to 2500 mm, length to diameter ratio of 100 or higher;
- With the ideal size accuracy, hole drilling accuracy of straightness, and roughness

05 | ShuangLi



机床的正视图
The front view of machine



全封闭式防护罩
Full enclosed shield

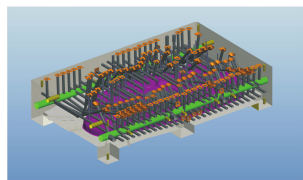


半封闭式防护罩
Semi-enclosed shield
ShuangLi | 06



PROCESSING CASE

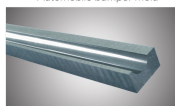
加工案例



3D展示
3D show



汽车保险杠模具
Automobile bumper mold



削孔展示
Hole-cutting show

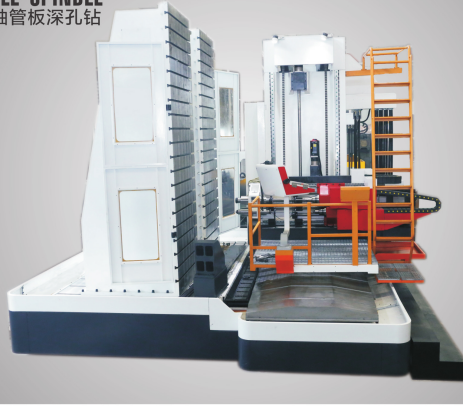
ZJA系列三座标数控深孔钻技术参数

Technical Specifications of ZJA Series Three-axis Deep-hole Drilling Machine Tool

项目/Items	ZJA06-0606	ZJA10-1088	ZJA13-1310	ZJA13-1610	ZJA15-1612	ZJA16-2012	ZJA15-2515	ZJA20-3015
加工能力 Drilling capacity								
加工孔径 Drilling aperture	$\pm 3-20\text{mm}$	$\pm 3-32\text{mm}$	$\pm 3-32\text{mm}$	$\pm 3-32\text{mm}$	$\pm 3-32\text{mm}$	$\pm 3-35\text{mm}$	$\pm 3-35\text{mm}$	$\pm 3-35\text{mm}$
加工深度 Drilling depth	600mm	1000mm	1300mm	1300mm	1500mm	1600mm	1500mm	2000mm
加工行程 Travel								
工作台式 X轴 Table horizontal	600mm	1000mm	1300mm	1600mm	1600mm	2000mm	2500mm	3000mm
主轴上下 Y轴 Main spindle vertical	600mm	800mm	1000mm	1000mm	1200mm	1200mm	1500mm	1500mm
加工速度 Speed								
主轴转速 Spindle speed	4500rpm							
主轴进给 Feed speed	0-3000mm/min							
工作台 Table								
尺寸 size	500×800mm	800×1200mm	900×1500mm	1000×1700mm	1000×1700mm	1400×2200mm	2500×1500mm	1600×3000mm
Max. loading capacity	3ton	5ton	8ton	10ton	12ton	15ton	15ton	20ton
功率 Power								
主轴电机 Spindle motor	5.5KW	11KW	11KW	11KW	11KW	11KW	11KW	11KW
X轴 X-axis motor	10 N.m	15 N.m	15 N.m	15 N.m	28 N.m	28 N.m	28 N.m	35 N.m
Y轴 Y-axis motor	10 N.m	15 N.m	15 N.m	15 N.m	28 N.m	28 N.m	28 N.m	28 N.m
Z轴 Z-axis motor	10 N.m	10 N.m	10 N.m	10 N.m	10 N.m	10 N.m	10 N.m	10 N.m
总功率 Total Power	24KW	30KW	30KW	32KW	32KW	36KW	36KW	36KW
冷却系统 Cooling system								
冷却压力 Cooling pressure	2-10kg/cm ²							
循环流量 Rate of flow	6-80L/min							
机床尺寸及重量 Size & Weight								
占地面积(长×宽) Floor space require (L×W)	4200×2600mm	4500×3200mm	4900×3700mm	5000×4000mm	5500×4000mm	6100×5400mm	6600×5500mm	8200×6500mm
机床高度 Machine height	2300mm	2650mm	2800mm	2800mm	3050mm	3250mm	3700mm	3600mm
机床重量 Machine weight	约5 ton	约9 ton	约11 ton	约12 ton	约13 ton	约18 ton	约18.5 ton	约21ton

因产品不断改良开发，参数规格及外观图片仅供参考，具体以实物为准，详情请登录网站：<https://www.shuanglicnc.com/>
Due to the continuous improvement of products, specifications and pictures are for reference only. For details, please visit our website: <https://www.shuanglicnc.com/>

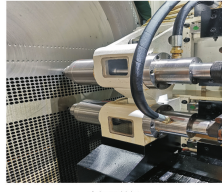
DOUBLE SPINDLE 双主轴管板深孔钻



PROCESSING CASE 加工案例



冷凝器
Condenser



冷凝器前板
The front plate of condenser

09 | ShuangLi

ZJG系列管板数控深孔钻

Technical Specifications of ZJG Series Tube Plate Deep-hole Drilling Machine Tool

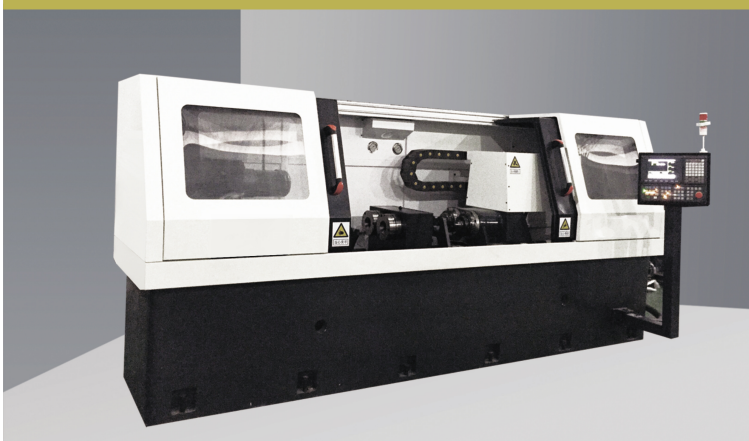
项目Items		ZJG08-2525	ZJG08-3020	ZJG08-4020	ZJG08-6030
加工能力 Processing Capacity	钻孔直径 Diameter of hole drilling	φ10-20mm			
	枪钻 Gun Drill	φ20-40mm			
加工行程 Processing Range	钻孔深度范围 Depth Range of the Hole	800mm			
	最大工件直径 Maximum Diameter	2500mm	3000mm	4000mm	6000mm
主轴 Spindle	X轴行程 X Axis Processing Range	2500mm	3000mm	4000mm	6000mm
	Y轴行程 Y Axis Processing Range	2500mm	2000mm	2000mm	3000mm
	Z轴行程 Z Axis Processing Range	850mm			
	主轴数量Qty. of spindle	2个pcs (可选1-4个Optional 1-4pcs)			
功率 Power	主轴电机 Spindle motor	15kw	15kw	15kw	15kw
	X轴伺服电机 X Axis Servo Motor	36Nm 1:4行星减速机	36Nm 1:4行星减速机	36Nm 1:4行星减速机	36Nm 1:4行星减速机
	Y轴伺服电机 Y Axis Servo Motor	36Nm 1:4行星减速机	36Nm 1:4行星减速机	36Nm 1:4行星减速机	36Nm 1:4行星减速机
	Z轴伺服电机 Z Axis Servo Motor	27Nm	27Nm	27Nm	27Nm
冷却系统 Cooling System	压力范围Pressure Range	2-10MPa	2-10MPa	2-10MPa	2-10MPa
	流量范围Flux Range	10-200L/min	10-200L/min	10-200L/min	10-200L/min
	油缸容量Capacity of Oil Tank	2000L	2000L	2000L	2000L
	工作台 Working Table	工作台平面尺寸Surface Size	2000×1600mm	3000×2500mm	4000×2600mm
机床 Machine Tool	工作台承重Max. Loading capacity	20T	30T	50T	80T
	立柱尺寸 Size of Standing Board	800×800×2000mm	800×800×2700mm	1200×1500×4000mm	1400×1800×6000mm
	立柱数量 Qty of Standing Board	2个pcs			
	机床重量Weight	30T	50T	60T	80T
冷却系统 Cooling System	压力范围Pressure Range	2-10MPa	2-10MPa	2-10MPa	2-10MPa
	流量范围Flux Range	10-200L/min	10-200L/min	10-200L/min	10-200L/min
工作台 Working Table	工作台平面尺寸Surface Size	2000×1600mm	3000×2500mm	4000×2600mm	6000×4000mm
	工作台承重Max. Loading capacity	20T	30T	50T	80T
机床 Machine Tool	立柱尺寸 Size of Standing Board	800×800×2000mm	800×800×2700mm	1200×1500×4000mm	1400×1800×6000mm
	立柱数量 Qty of Standing Board	2个pcs			
功率 Power	主轴电机 Spindle motor	15kw	15kw	15kw	15kw
	X轴伺服电机 X Axis Servo Motor	36Nm 1:4行星减速机	36Nm 1:4行星减速机	36Nm 1:4行星减速机	36Nm 1:4行星减速机
冷却系统 Cooling System	压力范围Pressure Range	2-10MPa	2-10MPa	2-10MPa	2-10MPa
	流量范围Flux Range	10-200L/min	10-200L/min	10-200L/min	10-200L/min
工作台 Working Table	工作台平面尺寸Surface Size	2000×1600mm	3000×2500mm	4000×2600mm	6000×4000mm
	工作台承重Max. Loading capacity	20T	30T	50T	80T
机床 Machine Tool	立柱尺寸 Size of Standing Board	800×800×2000mm	800×800×2700mm	1200×1500×4000mm	1400×1800×6000mm
	立柱数量 Qty of Standing Board	2个pcs			
功率 Power	主轴电机 Spindle motor	15kw	15kw	15kw	15kw
	X轴伺服电机 X Axis Servo Motor	36Nm 1:4行星减速机	36Nm 1:4行星减速机	36Nm 1:4行星减速机	36Nm 1:4行星减速机
冷却系统 Cooling System	压力范围Pressure Range	2-10MPa	2-10MPa	2-10MPa	2-10MPa
	流量范围Flux Range	10-200L/min	10-200L/min	10-200L/min	10-200L/min
工作台 Working Table	工作台平面尺寸Surface Size	2000×1600mm	3000×2500mm	4000×2600mm	6000×4000mm
	工作台承重Max. Loading capacity	20T	30T	50T	80T
机床 Machine Tool	立柱尺寸 Size of Standing Board	800×800×2000mm	800×800×2700mm	1200×1500×4000mm	1400×1800×6000mm
	立柱数量 Qty of Standing Board	2个pcs			

因产品不断改进开发，参数规格及外观图片仅供参考，具体以实物为准，详情请登录网站：<https://www.shuanglincnc.com/>
Due to the continuous improvement of products, specifications and pictures are for reference only. For details, please visit our website: <https://www.shuanglincnc.com/>

ShuangLi | 10

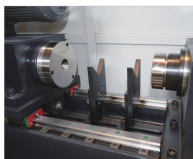
ZJZ SERIES AXIS CNC DEEP HOLE DRILLING MACHINE TOOL

ZJZ系列轴类数控深孔钻



本机床专为棒材轴类产品的加工而研发，根据用户的产能需求有单轴、双轴、四轴可供选择，工件的装夹可采用三爪卡盘或自驱式锥盘，切实为用户提供最适宜的解决方案。

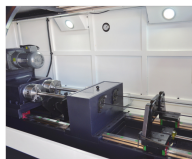
This machine is designed and developed for processing bar shaft products. Uniaxial, biaxial, four axis are optional according to user's demand. Three jaw chuck or self drive cone disc are adopted, to provide the most appropriate solutions to users.



锥顶式夹爪
Cone top clamp



自定心夹锥
Self centering clamping cone



卡盘式夹爪
Chuck clamp

11 | ShuangLi

ZJZ系列轴类数控深孔钻技术规格

Technical specification for ZJZ series axis CNC deep hole drilling machine tool

项目Items		ZJZ500	ZJZ1000	ZJZ1500
加工能力 Processing Capacity	加工孔径范围 Machining aperture range	φ4-φ30mm	φ4-φ30mm	φ4-φ30mm
	最大钻孔深度 Maximum drilling depth	500mm	1000mm	1500mm
	最大工件长度 The maximum length of workpiece	600mm	1100mm	1600mm
主轴 Spindle	主轴数量 Qty. of spindle	1个 (可选2-3个)	1个 (可选2-3个)	1个
	主轴中心距 Spindle centerline spacing	200mm	200mm	200mm
	主轴最高转速 Maximum Speed of spindle	4500rpm	4500rpm	4500rpm
	主轴进给速度 Spindle feed speed	100mm/min	100mm/min	100mm/min
	主轴快移速度 Spindle fast moving speed	1000mm/min	1000mm/min	1000mm/min
功率 Power	主轴电机 Spindle Motor	7.5kw	7.5kw	7.5kw
	机床总功率 Total Power	18kw	18kw	18kw
冷却系统 Cooling System	冷却液压力范围 Pressure range of cooling liquid	2-10MPa	2-10MPa	2-10MPa
	冷却液流量范围 Flux range of cooling liquid	0-200L/min	0-200L/min	0-200L/min
机床 Machine Tool	机床占地面积(长×宽) Floor Area of Machine Tool (Length×Width)	4300×2700×1900mm	4800×2800×1900mm	5000×2600×2000mm
	机床重量Weight	5ton	7ton	10ton

因产品不断改进开发，参数规格及外观图片仅供参考，具体以实物为准，详情请登录网站：<https://www.shuanglincnc.com/>
Due to the continuous improvement of products, specifications and pictures are for reference only. For details, please visit our website: <https://www.shuanglincnc.com/>

PROCESSING CASE 加工案例



汽车变速箱二轴
Biaxial for automobile gearbox



φ3mm 不锈钢深孔加工
Deep hole processing



40Cr 圆棒深孔加工
40Cr rod deep hole processing

ShuangLi | 12

ZJL SERIES VERTICAL CNC DEEP HOLE DRILLING MACHINE TOOL

ZJL系列立式数控深孔钻

ZJL SERIES VERTICAL CNC DEEP HOLE DRILLING MACHINE TOOL

ZJL系列立式数控深孔钻



ZJL系列立式数控深孔钻床是一种以钻、铣、镗为一体的自动化机床。

该机床集现代工业先进技术为一体。

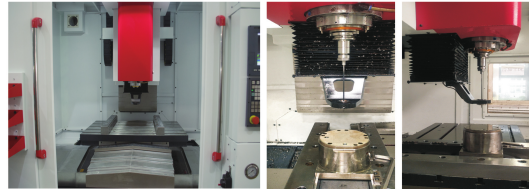
- 1.控制系统采用台湾新一代数控系统，性能稳定可靠，操作编程通用方便，售后服务完善及时。
- 2.运动部件采用高精度、滚珠丝杠、线性导轨，实现了机床运动中的精确定位。
- 3.本机床采用了温度控制装置，可根据钻孔的大小、材料的不同、出屑情况、精度要求等，分别调整不同的流量和压力，从而达到最优化的冷却液的供应。
- 4.主轴导向部分采用油缸驱动，运行平稳结构巧妙，导套受力均匀；间歇吹气功能能够及时有效的清理加工过程中产生的积屑现象。
- 5.主轴采用台湾知名品牌，具有承载精度高、扭矩大、噪音小等特点；主轴传动部分采用高扭力驱动形皮带传动，高转速的模块化设计，配合主轴承温度装置有效延长主轴的使用寿命，由于上述先进技术的采用使该机床的性能、精度、加工范围、操作、工作效率都达到了同类机床的先进水平。

ZJL series vertical CNC deep hole drilling machine is an automatic machine tool with drilling, milling and boring as one.

The machine integrates modern industrial advanced technology as below:

1. Taiwan SYNTEC CNC system: stable performance, convenient operation programming, perfect and punctual after-sales service.
2. With high-precision ball screw bar and rolling linear guide, the operating components make positioning accurately.
3. Remote control device is adopted in cooling system. Depends on the hole size, materials, chips and required precision, adjusting the flow rate and pressure can optimize the cooling result.
4. The guide part of the spindle is driven by a simple oil cylinder, with smooth operation, ingenious structure and uniform force on the guide sleeve; the intermittent air blowing function can timely and effectively clean up the chip accumulation phenomenon in the processing process.
5. The main shaft adopts Taiwan famous brand, which has the characteristics of high bearing accuracy, large torque and low noise; the main shaft transmission part adopts high torque front tooth belt pulley transmission, high-speed modular design, and the spindle constant temperature device can effectively prolong the service life of the spindle. Due to the adoption of the above advanced technology, the performance, precision, processing range, operation and work efficiency of the machine tool have reached the advanced level of millar machine tools.

ZJL系列立式数控深孔钻床广泛用于五金行业、家用电器、模具行业、医疗器械等。
ZJL series vertical CNC deep hole drilling machine is widely used in hardware industry, household appliances, mold industry, medical equipment, etc.

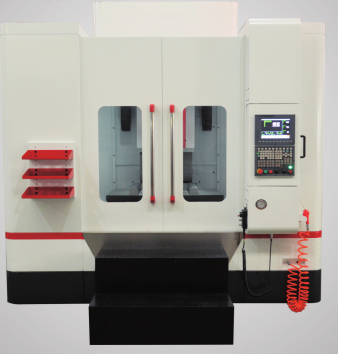


ZJL SERIES VERTICAL CNC DEEP HOLE DRILLING MACHINE TOOL

ZJL系列立式数控深孔钻

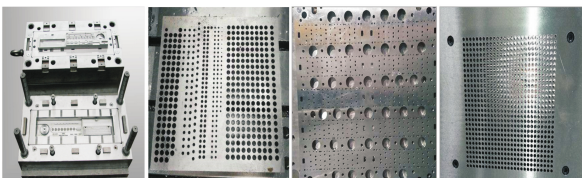
VERTICAL CNC DEEP HOLE DRILL

立式数控深孔钻



PROCESSING CASE

加工案例



ZJL系列立式数控深孔钻

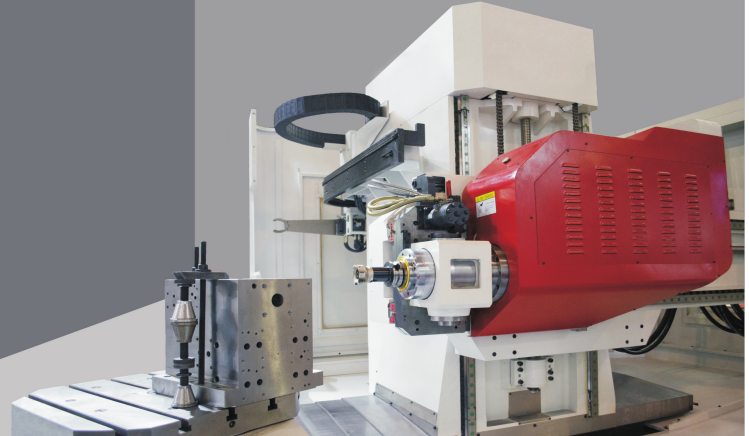
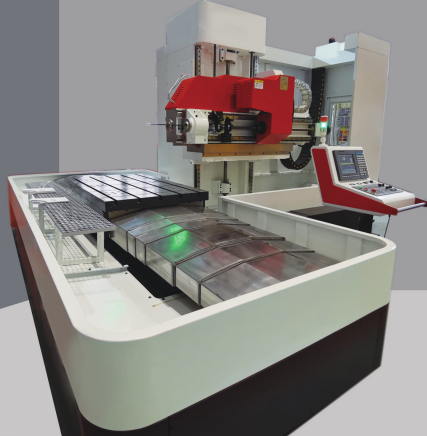
ZJL series vertical CNC deep hole drill machine tool

项目 Items	ZJL640	ZJL850	ZJL1060	
加工能力 Processing capacity	钻孔直径范围 Processing capacity	φ1.5-16mm	φ1.5-20mm	φ1.5-20mm
	钻孔最大深度 Max. Drilling depth	220mm	270mm	300mm
加工行程 Processing Range	X轴行程 X-axis processing range	600mm	800mm	1000mm
	Y轴行程 Y-axis processing range	400mm	500mm	600mm
	Z轴行程 Z-axis processing range	450mm	550mm	600mm
	工作台尺寸 Dimension of working table	700*450mm	1000*500mm	1100*700mm
工作台 Working Table	工作台承重 Max. Loading capacity	300 kg	500 kg	1000 kg
	工作台可摆槽数(槽宽×槽间距) T-slot of worktable (number of slots, dimension/spacing)	3-18x100mm	4-18x100mm	6-18x100mm
主轴 Spindle	主轴锥孔 The spindle taper hole	BT40	BT40	BT40/BT50
	主轴最高转速 Max. Speed of spindle	8000rpm/10000rpm	8000rpm/10000rpm	8000rpm/10000rpm
	主轴内孔孔径精度 Spindle inner hole	0.005 mm	0.005mm	0.005mm
	每套夹套数量 Quantity of grip sleeve	1个	1个	1个
进给速度 Feed Speed	快速移动 Fast move	10m/min	10m/min	10m/min
	Z轴孔钻进给速度范围 Z drilling feed rate range	0-500 mm/min	0-500 mm/min	0-500 mm/min
精度 accuracy	定位精度 Positioning accuracy	±0.005 mm	±0.005 mm	±0.005 mm
	重复定位精度 Repeat positioning accuracy	±0.005 mm	±0.005 mm	±0.005 mm
动力参数 Power parameter	主轴电机功率 Spindle servo motor	5.5kw	11kw	11kw/15 kw
	X轴进给电机功率 X-Axis Servo motor	2.6kw	3.9 kw	5.5 kw
	Y轴进给电机功率 Y-Axis Servo motor	2.6kw	3.9 kw	5.5 kw
	Z轴进给电机功率 Z-Axis Servo motor	5.5 kw	5.5 kw	5.5 kw
	机床总功率 Total Power	18 kw	22kw	24kw
	冷却液最大压力 Max. Fluid of coolant	2-120 kgf/cm ²	2-120 kgf/cm ²	2-120 kgf/cm ²
冷却系统 Cooling system	冷却液最大流量 Max. Flow of coolant liquid	40L/min	60L/min	60L/min
	切削油桶容量 Capacity of oil tank	200L	300L	300L
	油泵电机功率 Motor power of oil pump	5.5 kw*2	5.5 kw*2	5.5 kw*2
	磁性过滤精度 Magnetic filtration accuracy	20um	20um	20um
尺寸及重量 Measurement & Weight	机床占地面积(长×宽) Floor Area of machine (length*width)	2200mmx2600mm	2400mmx2800mm	3000mmx2850mm
	机床高度 Height	2400mm	2650mm	2900mm
	机床重量 Machine weight	4ton	5ton	7ton
系统 System	数控系统 cnc system	台湾新一代数控系统	台湾新一代数控系统	台湾新一代数控系统

因产品不断更新开发，参数规格及外观图片仅供参考，具体以实物为准，详情请登录网站：<https://www.shuanglicnc.com/>
Due to the continuous improvement of products, specifications and pictures are for reference only. For details, please visit our website: <https://www.shuanglicnc.com/>

ZJF SERIES OF NON-STANDARD CUSTOM DEEP HOLE DRILLING

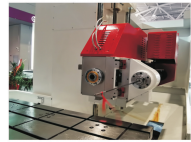
ZJF系列非标定制深孔钻



双主轴带铣功能深孔钻床

可根据用户需求增加数控回转工作台、自动刀库等功能，主要用于热流道等多工序零件的加工需求。

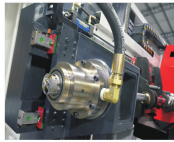
作为深孔加工、铣削加工的专用机床，产能和精度将会得到极大的提升！
Double spindle deep hole drilling machine with milling function can increase the functions of CNC rotary table and automatic tool magazine according to the user's requirements, mainly used for the processing requirements of multi process parts such as hot runner. As a special machine tool for deep hole machining and milling, its productivity and precision will be greatly improved!



四轴钻铣一体结构
Four axis drilling and milling integrated structure



六轴钻铣一体结构
Six axis drilling and milling integrated structure

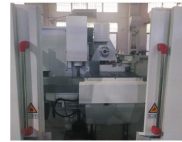


三轴枪钻、BTA一体结构
Three axis gun drill and BTA integrated structure

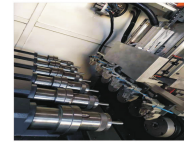
带刀库六轴深孔钻

双回转、刀库、钻铣一体五轴定制机床。应用范围：油路板、散热器及批量零件的复杂工序加工。

Single rotation, tool magazine, drilling and milling integrated five axis customized machine tool. Application scope: complex process processing of oil circuit board, radiator and batch parts.



工作台上下结构
Upper and lower structure of worktable



六主轴自动上下料结构
Six spindle automatic loading and unloading structure



双坐标双主轴结构
Double coordinate double spindle structure